

Tilt-Up Walls

The Inside Story

Indian River MotorHaus, the second facility partners Joe Schulke and Vic Lombardi are building in Vero Beach, is virtually indestructible. The MotorHaus will incorporate the same superior design and construction of its predecessor, Vero AutoHaus.

Why build with tilt-up walls? Simple: There is no stronger way to build. Wood frame construction? Forget it. CBS, (Concrete Block Structure), better, but still, it is just blocks stuck together with mortar.

Tilt-up walls are solid, poured on location, concrete, reinforced with a steel webbing. Steel corner brackets, steel L brackets and steel plates are cast into the walls. Then, after the walls are tilted into position, hi-grade steel bolts lock the walls together, into a concrete pad, and into the steel roof.

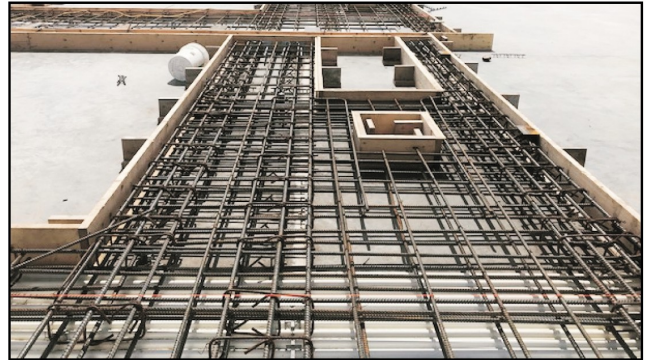
These walls have double the strength required by the Indian River County building code.

Tilt-up wall benefits are tremendous. The dense concrete is enormously fire/ heat resistant and provides greater noise attenuation. But, most importantly, you'll have the confidence of knowing your MotorHaus is built to the highest design & construction standards to ensure your classic cars, boats, RV, or other valuables assets are well protected from the storm. Your MotorHaus instantly becomes your BEST, close to home, hurricane refuge for your entire family, giving you security and stress reduction during a difficult time.

**INDIAN RIVER
MOTORHAUS**

4 2 3 5 U S H I G H W A Y 1

Vero Beach, Florida 32967
772-696-4287



Being molded: concrete tilt-up walls with steel reinforcement throughout.



A solid concrete tilt-up wall is placed in position.



A metal frame building after hurricane Michael... not a good thing for your classic cars.